

Scene Change Detection Setup

Document ID: I06B0509

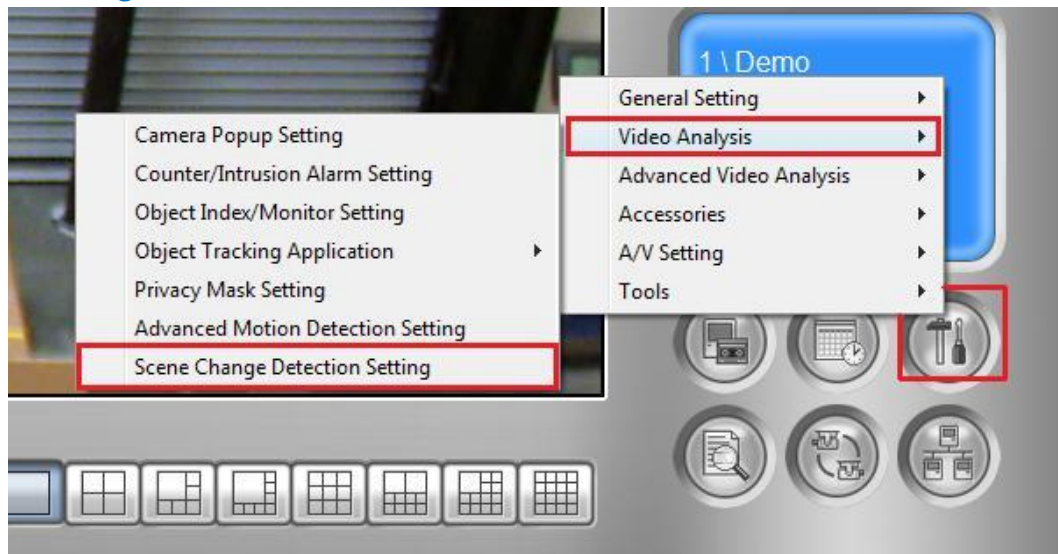
Objectives:

Video Analytics: Scene Change Detection Setup

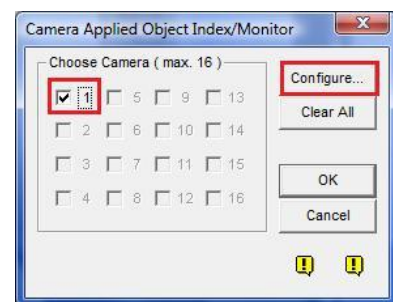
Applicable Multicam version: v8.0 and above

Video Analytics: Scene Change Detection Setup

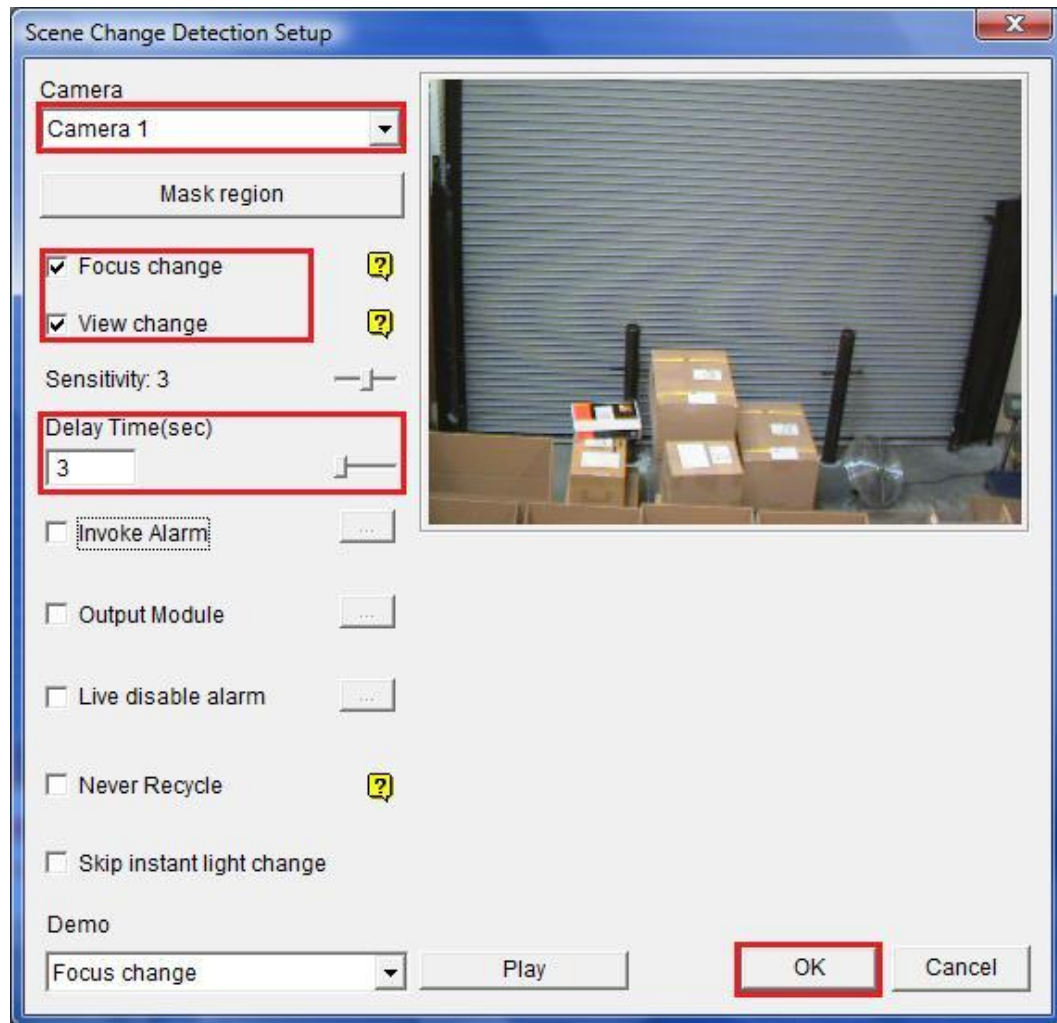
1. In GeoVision Multicam software, click on **Configure** button, select **Video Analysis**, then **Scene Change Detection Setting**



2. Select the camera(s) which Scene Change Detection is to be applied, then select **Configure**



3. Select the camera number from the drop-down list to enable scene change detection. Then, select **Focus change** and/or **View change** to enable detection



4. Adjust Delay Time(sec) to define a grace period before scene change will be triggered, then click **OK** to finish setup

- ✓ If the camera returns to its original focus/view within the grace period, it will not be recognized as scene change